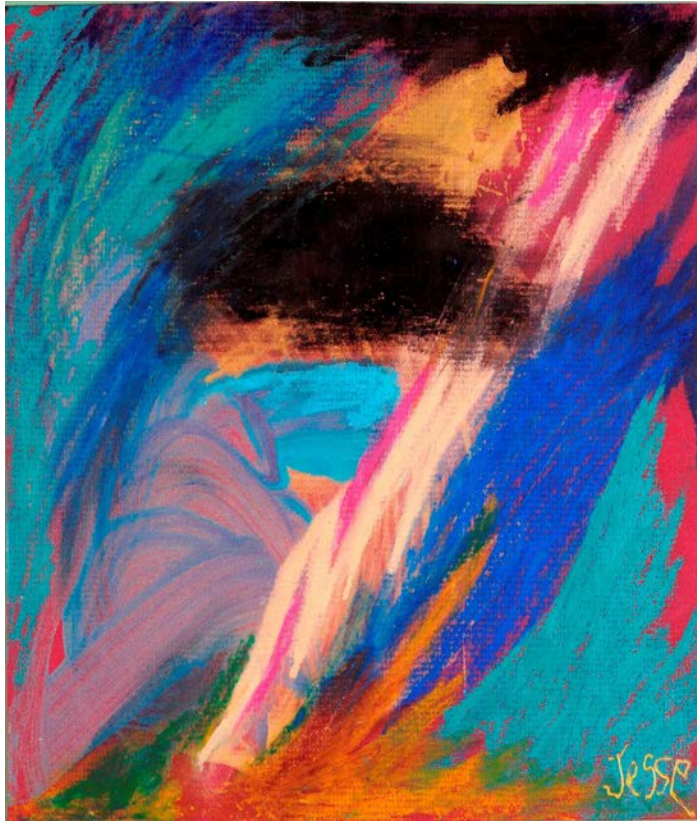


## **PARTICIPANT CORNER**

A beautiful painting by talented participant Jesse.



### **PLEASE SHARE YOUR TALENT:**

Are you a poet, storyteller, artist or just want to a picture of yourself doing a favorite activity or some great news? Please submit pictures of your original artwork, short stories, or poems. Articles to be featured in an upcoming Mi Via Newsletter.

Submissions can be sent to:

[Rachel.gonzales@state.nm.us](mailto:Rachel.gonzales@state.nm.us)

## **IN THIS ISSUE**

- **Participant Corner**
- **Email Updates Needed**
- **Face to Face Visits**
- **New Training Opportunities**
- **Come Be a Part of the Mi Via Advisory Committee**
- **Rate Study**
- **Just for Laughs**
- **Service Highlights**
- **Circle of Support**
- **Community Events**
- **Community Resources**

## **FMA-Conduent Contact Information:**

**Phone:** 1-800-283-4465

**Toll-free Fax:** 1-866-302-6787

**E-mail for Form Submission:**

[docprocessing@conduent.com](mailto:docprocessing@conduent.com)

**Physical Address:**

1720-A Randolph Rd SE

Albuquerque, NM 87106



**AUGUST 2022**

## Face-to-Face Visits

Revised Mi Via Service Standards went into effect July 1, 2022. One of the new requirements in the Mi Via service standards is for consultants to conduct monthly face-to-face visits with participants. Monthly face-to-face visits allows:

- an opportunity for stronger relationship-building
- more frequent advocacy and support for Mi Via participants and their families, and
- the ability to closely monitor participants' health and safety.

Also, staff from the Developmental Disabilities Supports Division (DDSD) have also been doing home visits with Mi Via participants and their families. DDSD is excited to meet more of our participants!

The July 2022 Mi Via Service Standards can be found at the link:

<https://nmhealth.org/about/ddsd/>

## New Training Opportunities!!

New in the Mi Via Service Standards is required trainings for Consultants, Mi Via workers and Employer of Records (EORs). You can find the required trainings at:

<https://www.cdd.unm.edu/other-disability-programs/>

[disability-health-policy/ddsd-courses/mi-via-consultant.html](https://www.cdd.unm.edu/other-disability-programs/disability-health-policy/ddsd-courses/mi-via-consultant.html).

If you have questions or need assistance accessing the trainings, please contact your consultant.

## Come Be a Part of the Mi Via Advisory Committee

The Mi Via Advisory Committee (MVAC) is accepting nominations for membership. The MVAC works with the State to on waiver improvements. If you are interested, please send an email and ask for a nomination form to: [Elaine.Hill@state.nm.us](mailto:Elaine.Hill@state.nm.us) This is a great opportunity to have your voice heard, advocate for change and improvements to the Mi Via Waiver, and to work together with many different people in making important decisions that can impact your services and supports.

### ACTIVITIES IN YOUR COMMUNITY

- Special Olympics 4 Corners Invitational 8/19-8/20 - Farmington
- 2022 Los Alamos Fair & Rodeo Parade 8/13- Los Alamos
- Mountainair Sunflower Festival Monte Alto Plaza 8/27- Mountainair
- Inaugural Forest Fiesta Mujeres Campground 8/13- Fence Lake
- Chama Days 8/11- Chama
- NM Comic Expo, 8/12-8/14-Alb Convention Ctr-Albuquerque



**AUGUST 2022**

## **SERVICE HIGHLIGHT – EMPLOYMENT SUPPORTS**

### **Department of Health (DOH) Rate Study**

The DOH Developmental Disabilities and Supports Division (DDSD) will be looking at provider rates and to see if New Mexico has enough providers in our communities to provide services. The rate study will look at rates paid to the following services: In Home Living Support, Physical Therapy, Occupational Therapy, Speech and Language Pathology and Behavior Support Consultation. Please participate in the rate study. Stay tuned for more information on how to be a part of the upcoming rate study.

- Employment Support services provide support to participants who want to find and maintain jobs of their choice in their community.
- Employment services are made to meet the individual needs of the participant.
- Participants get help from employment support professionals with job development and job coaching.
- Coaching services will include training on specific work task on the job, vocational skills, co-worker training, and job site study to name a few

### **JUST FOR LAUGHS**

What kind of shorts do clouds wear?

*Thunder pants*

Do you want to hear a construction joke?

*Sorry, I'm still working on it*

What do dentists call their x-rays?

*Tooth pics!*

### **COMMUNITY RESOURCES**

Below are different resources available all over New Mexico that may be able to assist with home repairs for low-income New Mexico residents

- Supportive Housing Coalition of NM (SHCNM)-<https://shcnm.org/>
- Bernalillo County Housing Department – BCHD 505-314-0226
- Ohkay Owingeh Housing Authority – OOHA 505-852-0189
- San Felipe Pueblo – SFHA-505-771-9291
- Southwestern Regional Housing & CDC – SRHCD-575-546-4181
- El Camino Housing Authority – ECHA-575-835-0196



**AUGUST 2022**

## Mi Via Circle of Support

MI VIA DOH Website: <https://nmhealth.org/about/ddsd/pgsv/sdw>

Consultant Agency Name	Contact Name	Phone	E-mail	Region(s)
<b>A New Vision</b>	Andrea Gonzales	505-553-3322	bluebirdcm@outlook.com	Metro and NE Regions
<b>Consumer Direct Personal Care (CDPC)</b>	Jacqueline Mares	505-344-8182 ext. 3536	jacquelinem@consumerdirectcare.com	All of New Mexico
<b>CNRAG, Inc. (Care Network Resource Assistance Group)</b>	Shaleen Diaz	575-621-3461	sdiaz@cnragusa.com	Metro, SE, and SW
<b>Excel Case Management, Inc.</b>	Jennifer Pennington	505-324-8660 ext. 102	jPennington@excelcasemanagement.com	NW and SE Regions
<b>Innovative Self Direction</b>	Frank Aquila	505-850-7662	faquila@innovativeselfdirection.com	All of New Mexico
<b>Los Amigos, LLC</b>	Michelle Rutt	505-920-4511	Michelle@losamigosnm.com	All of New Mexico
<b>Me Town Enterprises, LLC</b>	Kimberly Riebsomer	505-310-9069	riebsomer@gmail.com	Metro and NE
<b>Merit Consulting, LLC</b>	Melinda Broussard	505-288-2889	mbroussard.merit@gmail.com	Metro
<b>Peak Developmental Services</b>	Sarah Martinez	505-281-9962	smartinez@nmddwcm.com	All of New Mexico
<b>Self-Directed Choices</b>	Sandy Skaar Jacob Patterson	505-508-1663 505-331-3167	Sandy@sdchoices.com Jacob@SDChoices.com	All of New Mexico
<b>UNM Center for Development and Disability (CDD)</b>	Carrie Roberts Janelle Groover	505-280-6442 505-401-9328	CnRoberts@salud.unm.edu jtorresgroover@salud.unm.edu	All of New Mexico
<b>Visions Case Management</b>	Charles Clayton	575-779-7419 888-588-9152	Charles@visionsnm.com	All of New Mexico



**AUGUST 2022**

**Human Services Department / Medical Assistance Division – Exempt Services and Program Bureau**  
 PO Box 2348, Santa Fe, NM 87504-2348  
 Toll-free Phone: 1-888-997-2583, Fax: 505-827-7277

HSD manages the FMA/Conduent contract and the TPA/Comagine contract

<b>Deanna DeHerrera</b>	<b>Mi Via &amp; Medically Fragile Waivers Staff Manager</b> Functions: Mi via & Medically Fragile Waiver Oversight	505-629-7260	Deanna.DeHerrera@state.nm.us
<b>Rachel Gonzales</b>	<b>Mi Via Social &amp; Community Coordinator</b> Functions: Conduent, Billing, Payment issues	505-490-3721	Rachel.gonzales@state.nm.us
<b>Jennifer Romero</b>	<b>Mi Via Social &amp; Community Coordinator</b> Functions: Participant Eligibility Issues and Technical Assistance	505-469-8522	Jennifer.Romero3@state.nm.us

**Comagine Health**  
 PO Box 20910, Albuquerque, NM 87154-0190  
 Phone: 1-866-962-2180

Comagine Health is the Third-Party Assessor (TPA) for Mi Via. They are responsible for reviewing and approving the Service and Support Plans (SSP).

**Department of Health / Developmental Disabilities Supports Division**  
 5301 Central NE, Suite 203, Albuquerque, NM 87108  
 Phone: 1-800-283-5548

DOH operates the Mi Via Program for Developmental Disability (DD) and Medically Fragile (MF) Populations Oversees consultant agency contracts

<b>Elaine Hill</b>	<b>Mi Via Waiver Program Manager</b> Functions: Participant/Consultant Issues and Technical Assistance, and statewide MF WCF & MF CACF	505-506-6103	elaine.hill@state.nm.us Fax: 505-841-6523
<b>Rudy Aguilera</b>	<b>Mi Via Waiver Project Coordination</b> Functions: Participant/Consultant Issues and Technical Assistance	505-239-7826	rudy.aguilera@state.nm.us Fax: 505-841-6523

**Care Coordination**

<b>Blue Cross Blue Shield</b>	877-232-5518 Option 3	<a href="http://www.bcbsnm.com/community-centennial">www.bcbsnm.com/community-centennial</a>
<b>Presbyterian</b>	505-923-5200	<a href="http://www.phs.org/centennialcare">http://www.phs.org/centennialcare</a>
<b>Western Sky</b>	844-543-8996	<a href="http://www.westernskycommunitycare.com/">http://www.westernskycommunitycare.com/</a>



**AUGUST 2022**

# August 2022 Dates to Remember

Sun	Mon	Tue	Wed	Thu	Fri	Sat
	1	2	3	4	5 <i>Vendor Checks Received or Deposited</i>	6 <i>Deadline to submit PRFs for 8/12 payment</i>
7	8	9	10	11	12 <i>Paychecks and Vendor Checks Received or Deposited; end of the pay period.</i>	13 <i>Deadline to submit faxed timesheets, Mileage &amp; PRFs for 8/19 payment</i>
14	15	16	17	18	19 <i>Vendor Checks Received or Deposited</i>	20 <i>Deadline to submit PRFs for 8/26 payment</i>
21	22	23	24	25	26 <i>Paychecks and Vendor Checks Received or Deposited; end of the pay period.</i>	27 <i>Deadline to submit faxed timesheets, Mileage &amp; PRFs for 9/2 payment</i>
28	29	30	31	September 1	September 2 <i>Vendor Checks Received or Deposited</i>	September 3 <i>Deadline to submit PRFs for 9/9 payment</i>